



WHAT DOES AN
INCREMENTALLY DEVELOPED
NEIGHBOURHOOD LOOK LIKE?

INGABA IKHANGELEKA
NJANI INGINGQI ETHE
CHU UKUPHULISWA?

THE SOUTH AFRICAN GOVERNMENT WANTS INFORMAL SETTLEMENTS TO BE UPGRADED TO IMPROVE THE LIVING CONDITIONS OF RESIDENTS. IT TALKS ABOUT UPGRADE AS AN INCREMENTAL PROCESS, WHERE THE DEVELOPMENT OF THE SETTLEMENT TAKES PLACE OVER TIME. BECAUSE WATER, SANITATION, ELECTRICITY AND ROADS ARE SO IMPORTANT TO HUMAN WELL-BEING AND DIGNITY, THE PROVISION OF BASIC INFRASTRUCTURE IS USUALLY PRIORITISED. BUT TRANSFORMING INFORMAL SETTLEMENTS INTO PROPER NEIGHBOURHOODS IS A BIGGER, AND MORE AMBITIOUS TASK.

WE BELIEVE THAT INFORMAL SETTLEMENT UPGRADE IS KEY TO ADDRESSING POVERTY AND INEQUALITY. WE ALSO BELIEVE THAT RESIDENTS NEED TO HAVE A VOICE IN DECIDING ON THE FUTURE OF THEIR SETTLEMENT AND IN PRIORITISING ACTIONS THAT WILL SUPPORT THE GRADUAL DEVELOPMENT OF THEIR NEIGHBOURHOOD. WHAT IS IMPORTANT TO ONE COMMUNITY MAY BE LESS IMPORTANT TO ANOTHER. IT IS THEREFORE IMPORTANT TO HAVE CONVERSATIONS WITHIN COMMUNITIES AND WITH GOVERNMENT ABOUT WHAT THE SETTLEMENT WILL DEVELOP INTO, AND WHAT THE INCREMENTAL PROCESS IS TO REALISE THAT VISION.

This booklet and the video clip 'What does an incrementally developed neighbourhood look like' was made possible by Comic Relief.



Watch video via QR code

#1 English

URHULUMENTE WASEMZANTSI AFRIKA UFUNA UPHULISO LWENGINEQI ZOKUHLALA EZINGACWANGCISANGA ZIPHULISWE ZIBENEZINGA LENTLALO ENTLE KUBAHLALI. UTHETHA NGOPHULISO NJENGE MPUCUKO APHO UKUPHULA KOKUHLALISWA KUZOTHATHA IXESHA. KANGANGABA AMANZI, UCOCEKO, UMBANE KUNYE NEZENDELELA ZEZONA NTO ZIBALULEKILEYO ELUNTWINI NAKWISIDIMA, UKUBONELELA OKUSISISEKO KWEZAKHIWO NGESIQHELO, KUYE KUBEKELWE PHAMBILI. KODWA UKUGUQULA IINGINGQI EZINGACWANGCISANGA ZIBE NGOKWENGINEQI ZAMAZIKO KUBALUKHULU KWAYE KUBE NGUMSEBENZI WEBHONGO.

SIYATHEMBA OKOKUBA UPHULISO LWENGINEQI EZINGACWANGCISWANGA YEYONA MFUNO IPHAMBILI YOKUQOBISANA NENTLUPHEKO KUNYE NOKUNGALINGANI. SIKWATHEMBA OKOKUBA ABAHLALI BOBANESIDINGO SOBANEZIMYO NGEZIGQIBO ZEKAMVA LENDAWO ABAHLALA KUZO NASE KUBEKENI PHAMBILI IINTSHUKUMO EZIZOBASEKA NGOKUTHE NGCEMBE EKWAKHIWENTI UPHULISO LWENDAWO ZABO ZOKUHLALA. INTO INGABALULEKA KWINGINGQI ENYE IBE INGABALULEKANGA KWENYE. YI LONTO KUBALULEKILE OKOKUBA KUBE NOTHETHA THETHWANO KWINGINGQI NGENGQINGI BEKUNYE NO RHULUMENTE NGENDLELA UPHULISO ELIZOQHUTYWA NGALO, KUNYE NONYUSO NKQUBO UKUQHAPHELA LOO MBONO.

Le ncwadana kunye nalo mboniso bhanya bhanya othi 'Ingaba ikhangeleka njani ingingqi ethe chu ukuphuhliswa' wenziwe wenzeka ngabakwa Comic Relief.



Watch video via QR code

#2 Xhosa

WE ENVISAGE
A FUTURE WHERE ...

SIBONA IKAMVA APHO ...



INFORMALITY REMAINS A LONG-TERM FEATURE OF
THE MUNICIPAL LANDSCAPE

UKUHLALA KWIINDAWO EZINGAKHIWANGA
NGOKUSESIKWENI KUYA KUHLALA KUYINTO
EKHOYO IXESHA ELIDE KWIMIHLEBA KAMASTIPALA,

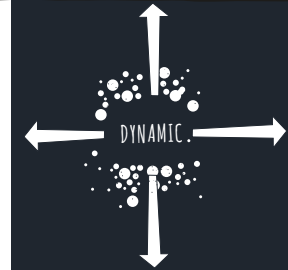
AS SETTLEMENTS EMBARK
ON THEIR OWN TRAJECTORIES

NJENGOKUBA IINDAWO
ZOKUHLALA ZITYHALELA
KWEZAZO IINDLELA

TOWARDS DIGNIFIED, DYNAMIC AND
INCLUSIVE NEIGHBOURHOODS.



UKUYA KWTINGINGQI ZOKUHLALA EZINESIDIMA, EZINENKANGELEKO
EDLAMKISAYO NEZIQUKA WONKE UMNTU.



SETTLEMENTS IMPROVE INCREMENTALLY,

AS AND WHEN HOUSEHOLDS AND GOVERNMENT
ARE ABLE TO UNLOCK RESOURCES,

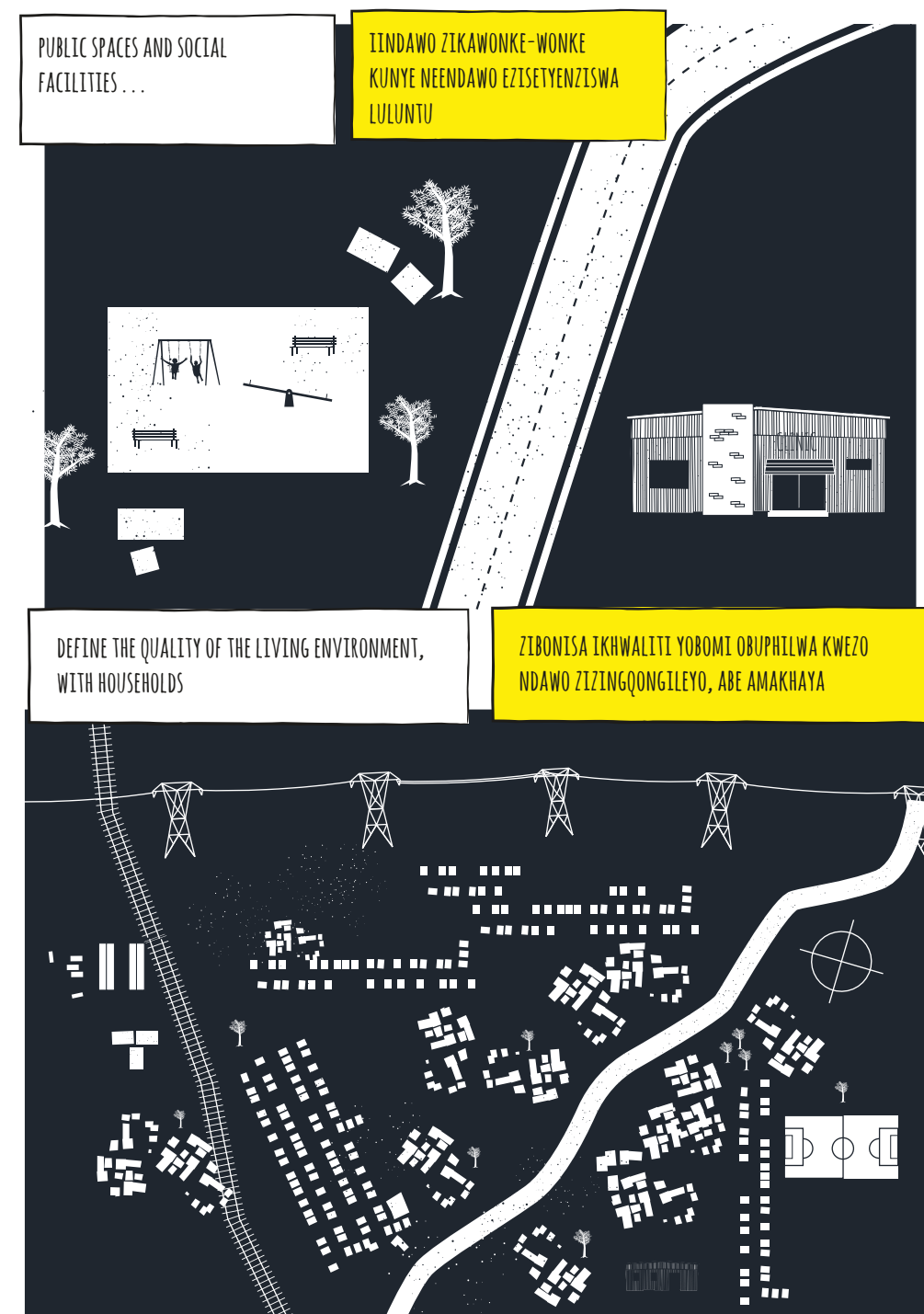
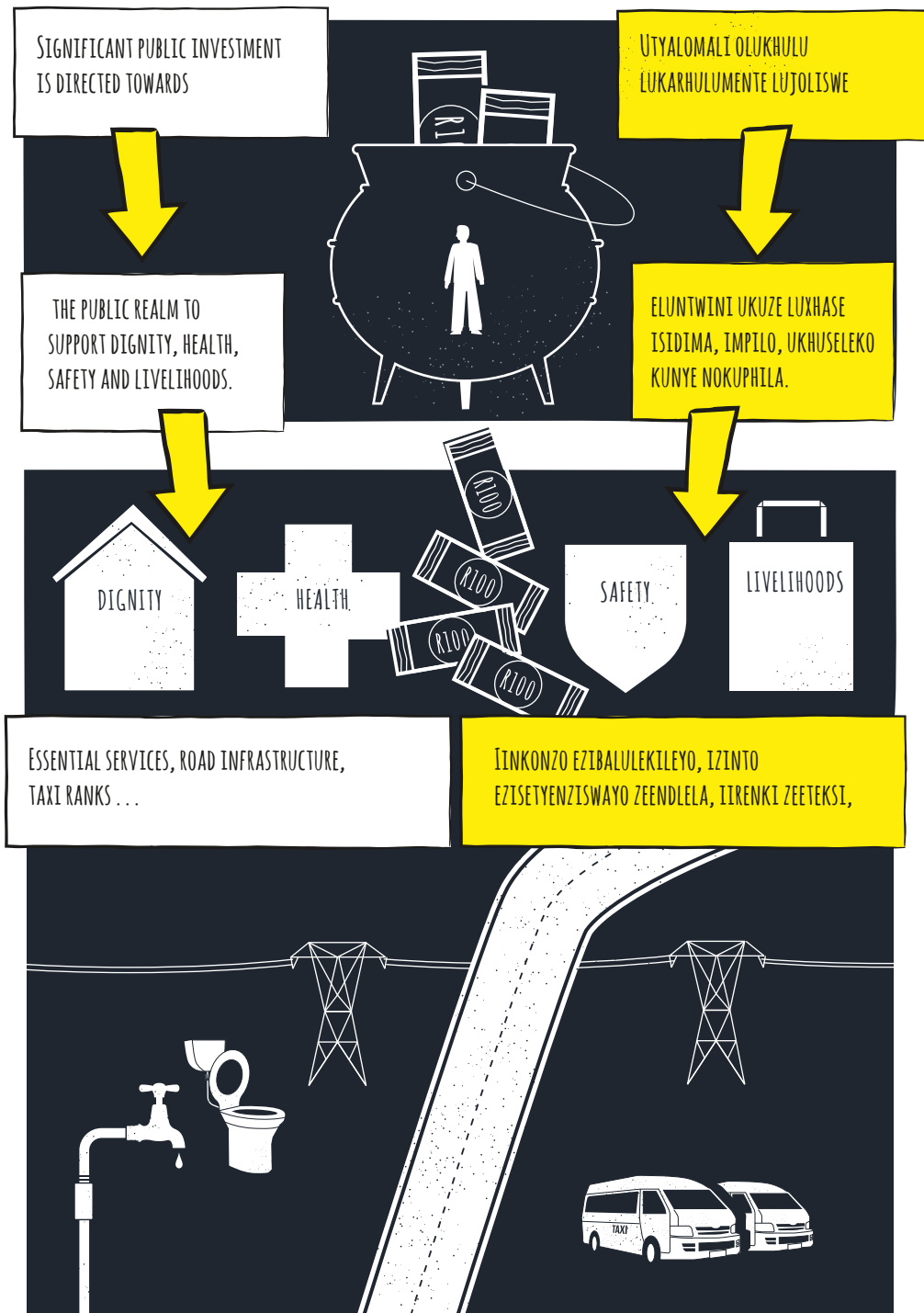
IINDAWO ZOKUHLALA ZITHE CHU UKUPHUCUKA,

NJENGOKUBA AMAKHAYA NORHULUMENTE
ESIYA EKWAZI UKUVULELA OOVIMBA
NAXA OKO KUSENZEKA,



IN LINE WITH A CLEARLY NEGOTIATED
VISION AND PLAN OF THE
'NEIGHBOURHOOD IN BECOMING'.

KUBE KUHAMBELANA NOMBONO
KUNYE NESICWANGCISO
EKUVUNYELWENE NGASO
NGOKUCACILEYO NGALE NGINGQI
IZA KUBAKHO.



ASSURED OF THEIR RIGHT TO
STAY AND BUILD

THROUGH SUITABLE TENURE
SECURITY MODALITIES.

EQINISEKISIWE NGELUNGELO
LAWO LOKUHLALA NOKWAKHA

NGOKUSETYENZISWA KWEENDLELA
EZIFANELEKILEYO ZOKUQINISEKA
UKUBAMBELELA KWEZO NDAWO.

THE GRADUAL PROGRESSION TOWARDS GREATER
TENURE SECURITY DOES NOT NECESSARILY
RESULT IN FREEHOLD TITLE.

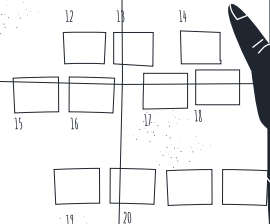
INKQUBELA ETHE CHU UKUYA KUKUQINISEKISWA
KOKUBAMBELELA OKUKHULU NANGAKUMBI
KWIINDAWO AKUTHETHI UKUBA ABANTU
BAZAKUPHELELA BENAMALUNGELO OBUNINI
NGOKUPHELELEYO.

FREEHOLD TITLE

OCCUPATION CERTIFICATE

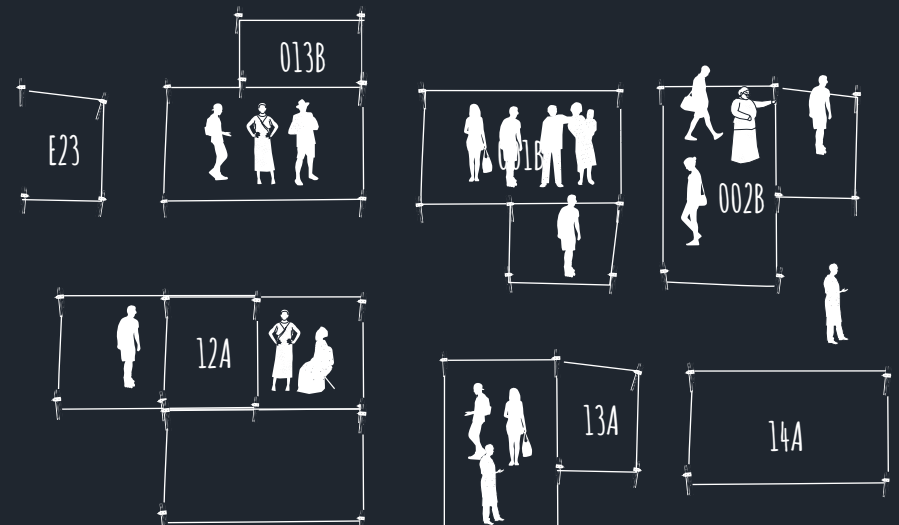
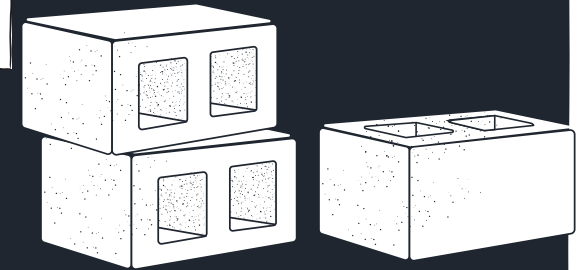
COMMUNAL LAND RIGHTS

ZONING 3A 3B



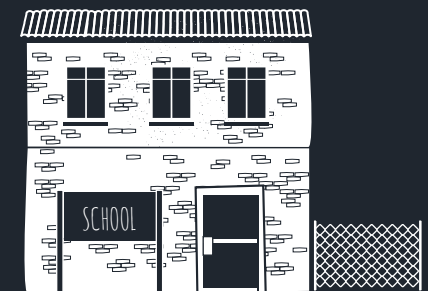
THE RIGHT TO STAY AND THE RIGHT TO BUILD DO
NOT REQUIRE INDIVIDUAL LAND OWNERSHIP.

ILUNGELO LOKUHLALA KUNYE
NELUNGELO LOKWAKHA ALIDINGI
UKUBA UMNTU ABE NGUMNINI
WOMHLABA.



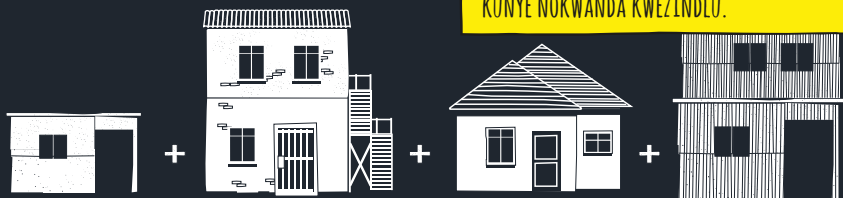
EMERGING NEIGHBOURHOODS COMBINE FORMAL AND
INFORMAL ELEMENTS.

IINGINGQI EZISAHLUMAYO ZIDIBANISA IIMPAWU
ZEENDAWO EZAKHIWE NGOKUSESIKWENTI
NEZINGAKHIWANGA NGOKUSESIKWENTI.



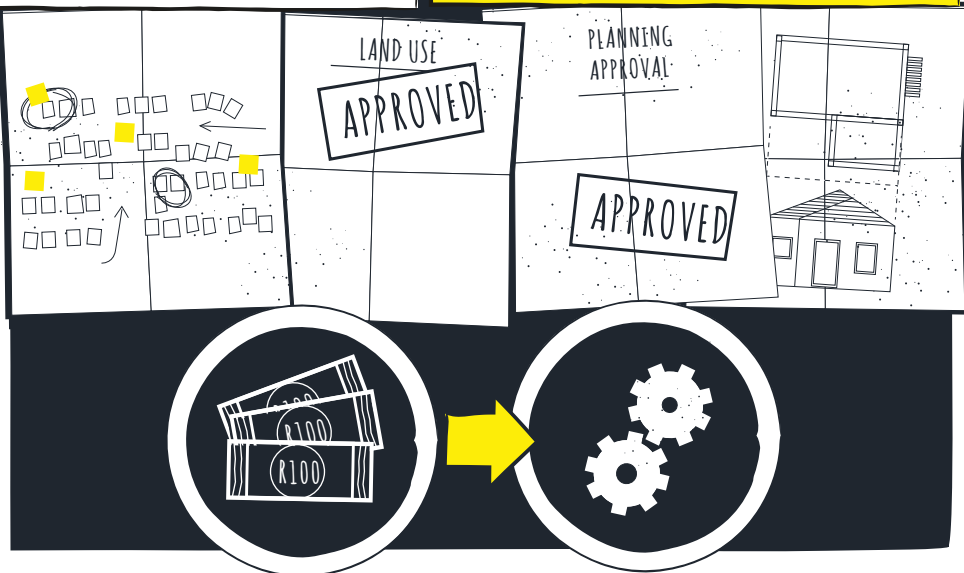
A VARIETY OF HOUSING SOLUTIONS ARE ON OFFER, WITH A STRONG BIAS TOWARDS EPHP AND INCREMENTAL HOUSING.

KUKHO INTLANINGE YEZISOMBULULO EZIBONELELWAYO NGOLWAKHTWO LWEZINDLU, EZIKEKELELA KWELI CALA LENKQUBO EPHUCULIWEYO YOKWAKHIWA KWEZINDLU ZABANTU (I-ENHANCED PEOPLE'S HOUSING PROCESS) KUNYE NOKWANDA KWEZINDLU.



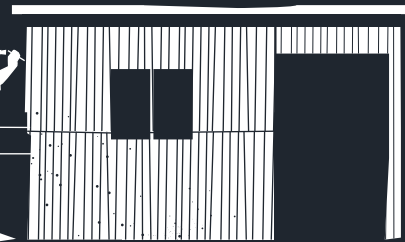
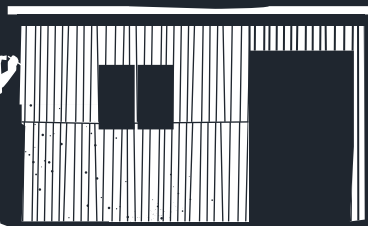
THROUGH ZONING, LAND USE APPROVAL, PLANNING APPROVAL, TEMPLATES FOR BUILDING PLANS, FINANCIAL AND OTHER TECHNICAL SUPPORT,

NGOKUZOWUNWA KOMHLABA, UKUVUNYELWA KOKUSETYENZISWA KOMHLABA, UKUVUNYELWA KWEZICWANGCISO, IMIFUZI SELO YEZICWANGCISO ZOKWAKHA,



MUNICIPALITIES SUPPORT SELF-BUILD AND INCENTIVISE A LOCAL CONSTRUCTION SECTOR.

INKXASO YEZEMALI KUNYE NEYOBUCHULE BOKUSEBENZA, OOMASIPALA BAXHASA UKUZAKHELA KWAYE BAHLOWULA IMALI YENKUTHAZO KUMASHISHINI OKWAKHA ASEKHAYA.



MANY RESIDENTS USE THEIR PLOTS AND SHELTER TO GENERATE A LIVELIHOOD AND SERVICE TO THEIR COMMUNITY.

ABAHLALI ABANINZI BASEBENZISA IMIHLABA YABO YOKWAKHA NAMAKHAYA ABO UKUZENZELA UKUPHILA NOKUNCEDISA ULUNTU LWABO.



SPAZA SHOPS, CRÈCHES, TAILORS, HAIRDRESSER SALONS, SAFE SHEBEENS, CHURCHES, MOSQUES AND RENTAL ACCOMMODATION ALL CONTRIBUTE TO THE VIBRANCY OF THE NEIGHBOURHOOD.

IZIKROXO, IIKHRITSHI, ABATHUNGI, IISALONI ZEENWELE, IISHIBHINI EZIKHUSELEKILEYO, IICAWÉ, IIMOSK KUNYE NEENDAWO ZOKUHLALA EZIQASHISWAYO, ZONKE ZINEGALELO KUBOMI OBUDLAMKILEYO BENGINQI.

WHILE SOME REGULATION OF THESE ACTIVITIES MAY EXIST, MUNICIPALITIES WILL HAVE SIMPLE AND RESPONSIVE SYSTEMS.

NANGONA KUSENOKUBAKHO ULAWULO OLUTHILE LWALE MISETYENZANA, OOMASIPALA BAYA KUBA NEENKQUBO ZOKUSEBENZA EZILULA NEZIKWAZIYO UKUSABELA.

REGULATIONS



AFTER ALL, THE PRIMARY INTEREST IS TO ADDRESS POVERTY

KAKADE, EYONA MFUNO IPHAMBILI KUKUHLANGABEZANA NENTLUPHEKO KUNYE



AND STRENGTHEN LIVELIHOOD OPPORTUNITIES.

NOKOMELEZA AMATHUBA OKUPHILA.

JOBS

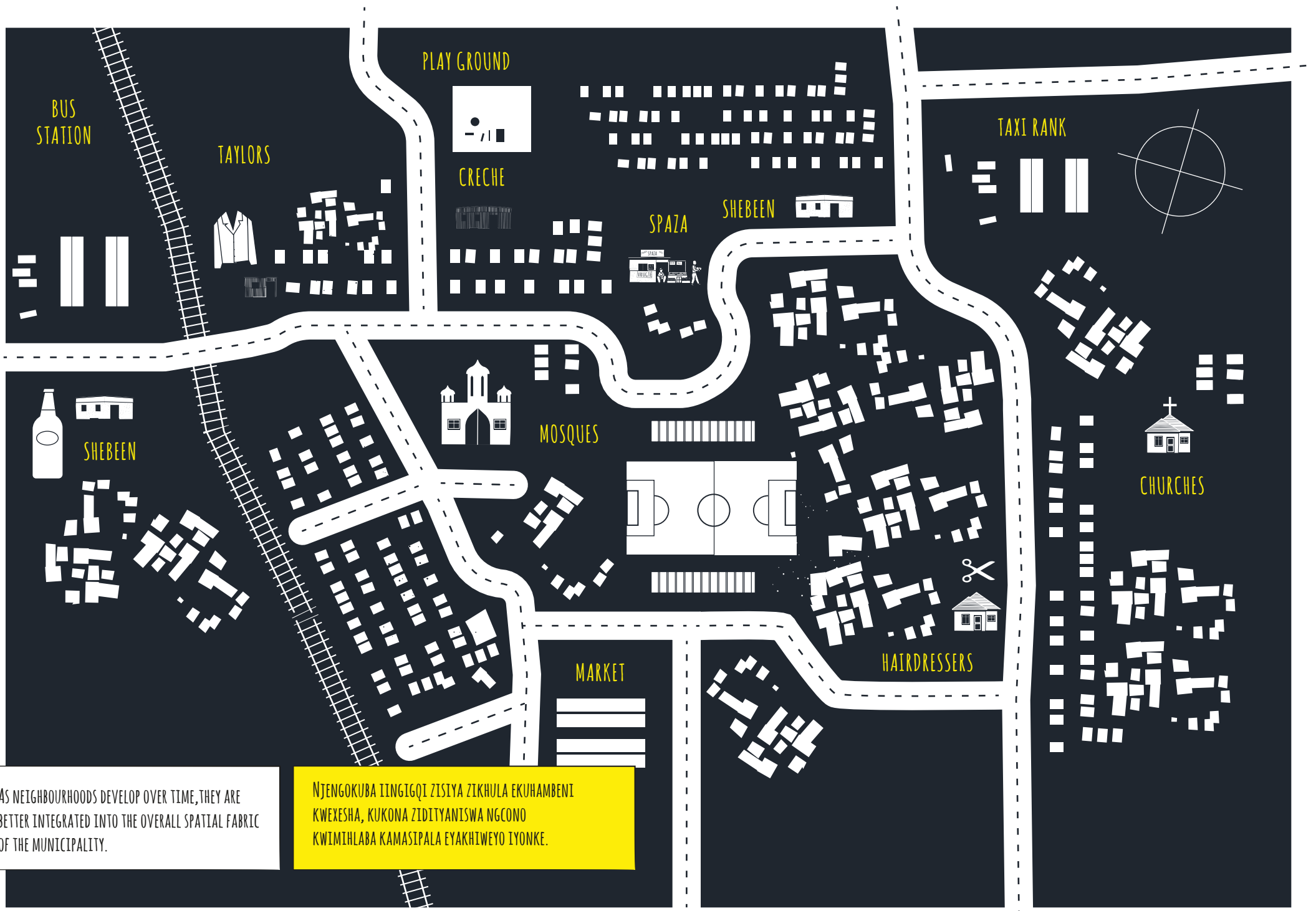
TO LET
599-9835

SKILLS
DEVELOPMENT

ENTREPRENEURSHIP

LEARNING





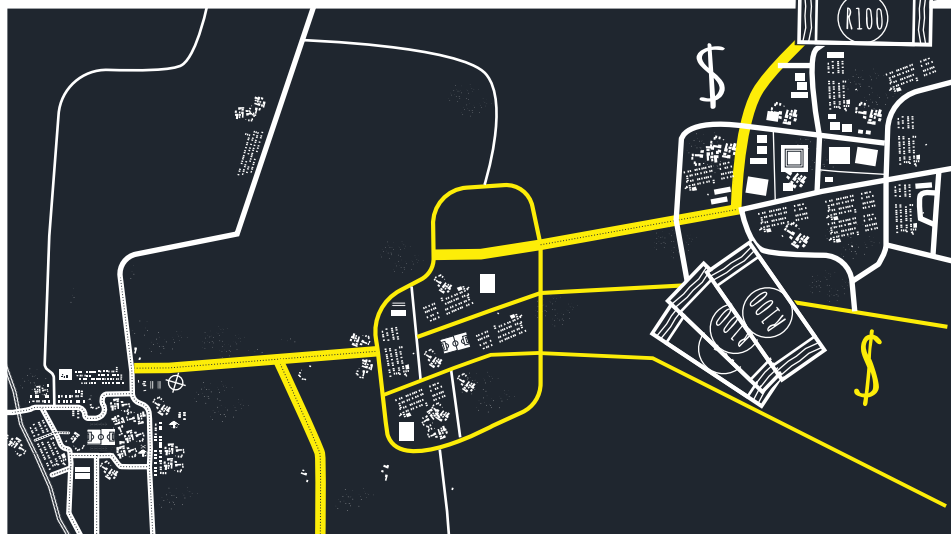
AS NEIGHBOURHOODS DEVELOP OVER TIME, THEY ARE BETTER INTEGRATED INTO THE OVERALL SPATIAL FABRIC OF THE MUNICIPALITY.

NJENGOKUBA IINGIGQI ZISIYA ZIKHULA EKHAMBENI KWEXESHA, KUKONA ZIDITYANISWA NGCONO KWIMIHLABA KAMASIPALA EYAKHIWEYO IYONKE.



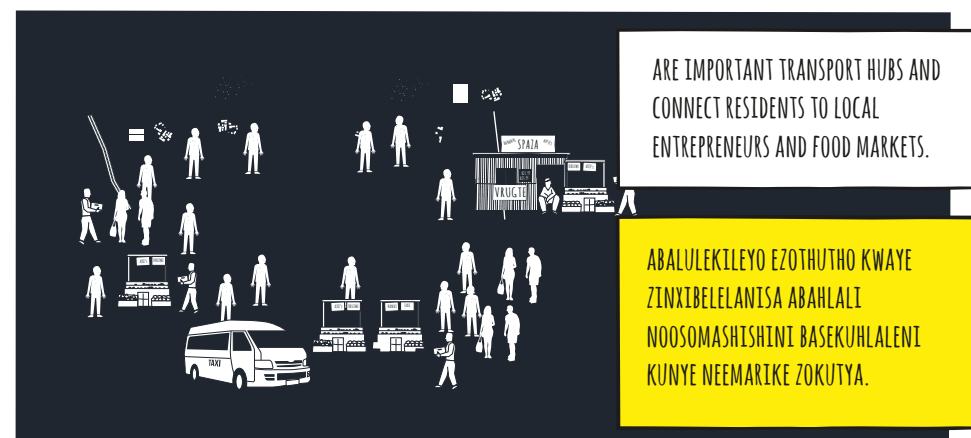
PHYSICAL AND VIRTUAL PATHWAYS ARE CREATED TOWARDS ADJACENT NEIGHBOURHOODS AND CENTRES OF ECONOMIC OPPORTUNITY.

KUDALWA IINDLELA ZOQOBO NEZEKHOMPYUTHA UKUYA KWIINGINGQI EZIMELELENEYO NAKWIINDAWO EZINAMATHUBA OSHISHINO.



TAXI RANKS AND BUS STOPS, PROVIDED FOR AT AN EARLY STAGE OF NEIGHBOURHOOD DEVELOPMENT

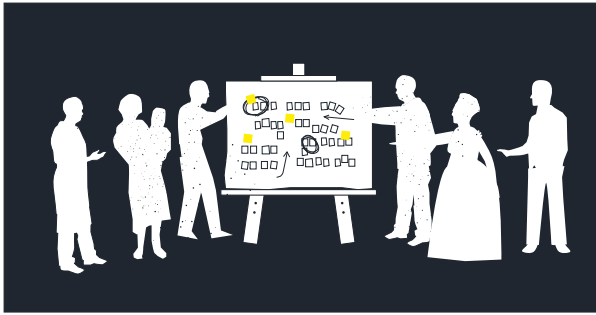
IIRENKI ZEETEKSI KUNYE NEZITOPHU ZEEBHASI, EZIBONELELWA KWASEBUTSHENI BOPHULISO LWENGINGQI, NGAMAZIKO



ARE IMPORTANT TRANSPORT HUBS AND CONNECT RESIDENTS TO LOCAL ENTREPRENEURS AND FOOD MARKETS.

ABALULEKILEYO EZOTHUTHO KWAYE ZINXIBELELANISA ABAHLALI NOOSOMASHISHINI BASEKUHLALANI KUNYE NEEMARIKE ZOKUTYA.

THROUGHOUT, COMMUNITIES ARE ACTIVELY INVOLVED IN THE DEVELOPMENT OF THEIR NEIGHBOURHOODS AS ENUMERATORS, PLANNERS, MONITORS, NEGOTIATORS, LABOURERS AND MORE.



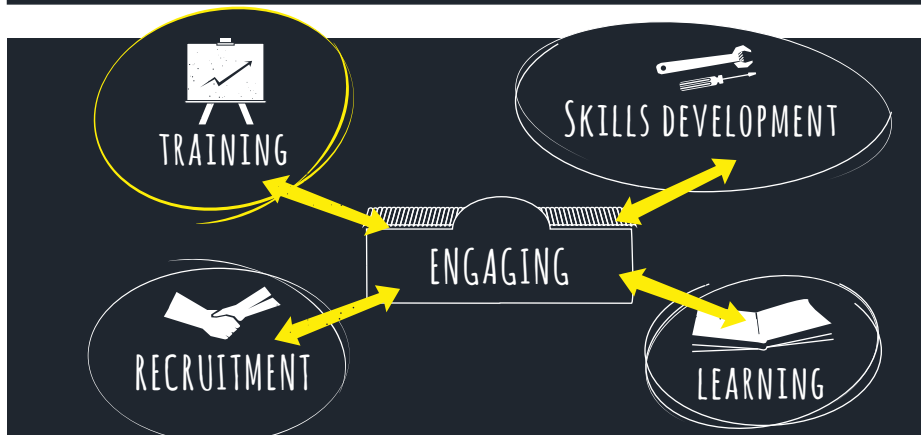
KUZO ZONKE IINDAWO, ULUNTU LUYABANDAKANYEKA KUPHULISO LWEENGINGQI ZALO NJENGABALI BOLUNTU, ABACWANGCISI, AMAHANKATHA, ABATHETHELI, ABASEBENZI NOKUNYE.



THE MUNICIPALITY HAS INVESTED SIGNIFICANTLY IN ITS CAPACITY TO BE ENGAGED AND RESPONSIVE,



UMASIPALA UTYALE IMALI ENINZI EMANDLENI AKHE OKUBANDAKANYEKA NOKUSABELA,



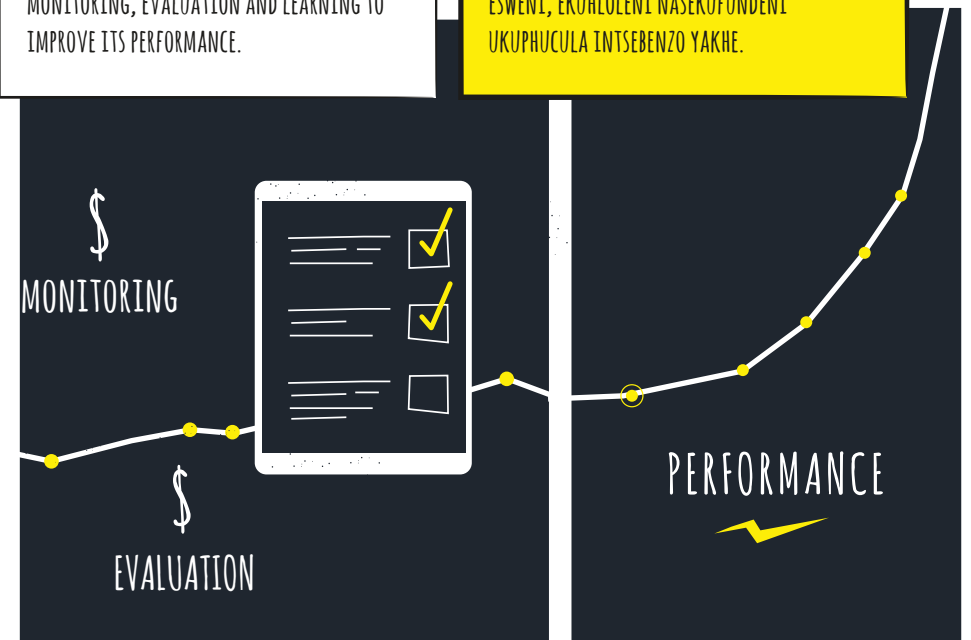
TO DRIVE IMPLEMENTATION, AND TO ASSEMBLE RESOURCES AND PARTNERSHIPS WITH OTHER STAKEHOLDERS.

OKUQHUBA UKWENZIWA KWEZICWANGCISO, KUNYE NAWOKUQOKELELA OOVIMBA KUNYE NOKUSEBENZISANA NAMANYE AMAQELA ABANDAKANYEKAYO.



THE MUNICIPALITY HAS ALSO INVESTED IN MONITORING, EVALUATION AND LEARNING TO IMPROVE ITS PERFORMANCE.

KANANJALO UMASIPALA UTYALE IMALI EKUBEKENI ESWENI, EKHLOLENI NASEKUFUNDENI UKUPHUCULA INTSEBENZO YAKHE.



HOW DO YOU SEE THE TRANSFORMATION OF INFORMAL SETTLEMENTS UNFOLDING?



INGABA WENA UZIBONA ZISENZEKA NJANI IINGUQU ZEENDAWO ZOKUHLALA
EZINGAKHIWANGA NGOKUSESIKWENTI?

NOTES/AMANQAKU



www.sasdialliance.org.za/about/corc



www.dag.org.za



www.habitat.org.za



www.isandla.org.za



www.peoplesenvironmentalplanning.org.za



www.ubu.bz



www.vpuu.org.za

Designed by Anotherlove Productions
www.anotherloveproductions.co.za